

# Tellabs® 8000 Network Manager Resilience Service

The Tellabs® 8000 Network Manager is a vital tool to help your network remain in peak condition. Its integration with your internal operational support systems and business support systems provides valuable data for your organisation. Loss of the Tellabs 8000 manager, for even a short time, could seriously impact both your customers and internal groups within your organisation. Poor disaster recovery plans could result in lost revenue and customer dissatisfaction.

Tellabs has extensive experience ranging from implementing basic database back ups to full disaster recovery solutions. Our disaster recovery team uses tried-and-tested processes and tools to deliver your solution quickly and efficiently. The Tellabs® 8000 Network Manager Resilience Service helps minimize the risk and exposure from loss of your network management system.

## High Availability

Some disaster recovery offerings focus merely on minimizing the downtime before recovery. This Tellabs® 8000 Network Manager Resilience Service goes further by enabling you (either automatically or manually) to transparently route end users to a backup system without missing a beat — helping protect your users from the worry and hassle of system downtime and data loss.

## Resilient Support

Many companies seek to address the problem of potentially corrupted data by replicating their database and having a warm standby ready to be brought up in the event of a system failure. Also referred to as logical replication, this approach ensures synchronization between the primary and standby database by replicating transactions on an ongoing or scheduled basis.

The Tellabs 8000 Network Manager Resilience Service combines logical replication with hardware redundancy, so that the two databases run on separate machines with each database writing to a separate disk device; this provides far greater protection against loss of availability.

## Disaster Recovery Site Flexibility

Natural and man-made disasters can all impact your network. Planning ahead for your disaster recovery system makes sound business sense.

Surprisingly, some disaster recovery solutions have technical constraints which can lead to the disaster recovery system being located inappropriately within the same building as the one it is supposed to be protecting.

The Tellabs 8000 Network Manager Resilience Service can be located almost anywhere in the world provided there are sufficient communication resources between the main and the secondary sites.



## Remote System Supervision

Ongoing management of the relevant databases is crucial to ensure system availability, however this is not usually a priority activity for network operators. The Tellabs 8000 Network Manager Resilience Service solves this issue by providing automatic remote supervision of your database systems. This is transparent to, and requires no intervention from, your staff. This proactive monitoring system works to keep your network management environment operational by supervising the following elements:

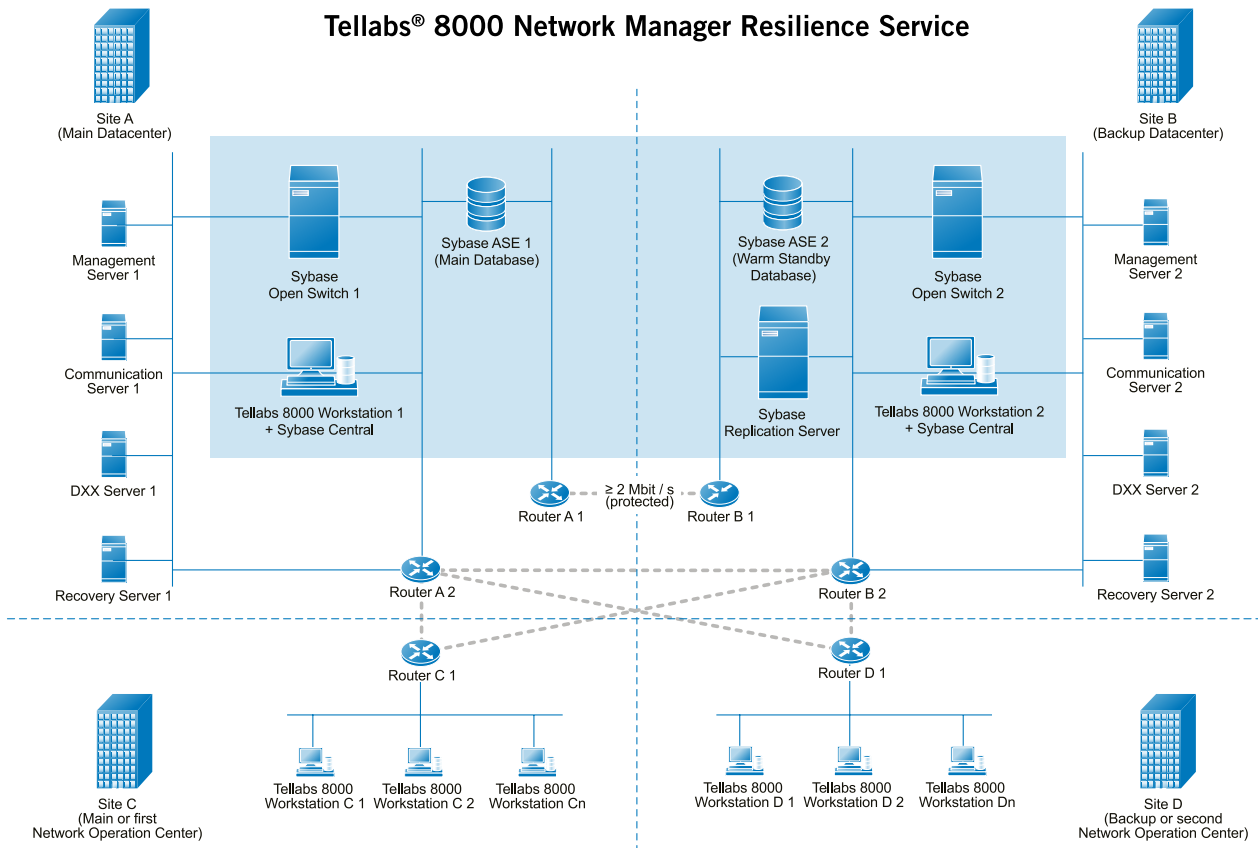
- Disk space
- Processes
- Log size
- Log growing too fast
- Log error search (looking for exceptions)
- Log transfer to server
- Data latency check between in main and disaster recovery site
- The remote software installation

In case of an exception, an alarm will be raised and Tellabs will then arrange with the customer for manual intervention.

## Solution Components

The Tellabs 8000 Network Manager Resilience Service will be tailored to align with your current systems and requirements. The standard components provided are:

- System architecture and design
- Server hardware
- Software licenses
- Pre-installation and configuration
- Remote or onsite implementation
- Technical support
- Proactive remote supervision
- Training



## Supported Systems

The Tellabs 8000 Network Manager Resilience Service is designed to operate with the main server operating systems as follows:

- Database Servers – Unix (Sun Solaris) & Windows
- Replication Server – Linux & Unix (Sun Solaris)
- Open Switch Servers – Linux & Unix (Sun Solaris)

## Ordering and Availability

The Tellabs 8000 Network Manager Resilience Service can be customized to your specific requirements and is available to Tellabs customers across the globe. For further information on these services, please consult your local Tellabs account manager or regional sales office.

## Tellabs Global Services

Tellabs has over 30 years of experience planning, building and operating advanced network solutions for service providers around the world. With a direct presence in Asia Pacific, Europe, Middle

### North America

Tellabs  
One Tellabs Center  
1415 West Diehl Road  
Naperville, IL 60563  
U.S.A.  
+1 630 798 8800  
Fax: +1 630 798 2000

### Asia Pacific

Tellabs  
3 Anson Road  
#14-01 Springleaf Tower  
Singapore 079909  
Republic of Singapore  
+65 6215 6411  
Fax: +65 6215 6422

### Europe, Middle East & Africa

Tellabs  
Abbey Place  
24-28 Easton Street  
High Wycombe, Bucks  
United Kingdom  
HP11 1NT  
+44 870 238 4700  
Fax: +44 870 238 4851

### Latin America & Caribbean

Tellabs  
1401 N.W. 136th Avenue  
Suite 202  
Sunrise, FL 33323  
U.S.A.  
+1 954 839 2800  
Fax: +1 954 839 2828

East and Africa, Latin America, and North America, Tellabs Global Services works closely with our customers to reduce time-to-market and lower the costs and complexity of planning, building and operating advanced networks.

For more information on how Tellabs Global Services can help meet your unique business and technology challenges, contact your local Tellabs sales account manager or authorized partner.



**Tellabs' integrated services portfolio is designed to deliver total project implementation for a comprehensive, end-to-end solution.**

Statements herein may contain projections or other forward-looking statements regarding future events, products, features, technology and resulting commercial or technological benefits and advantages. These statements are for discussion purposes only, are subject to change and are not to be construed as instructions, product specifications, guarantees or warranties. Actual results may differ materially.

The following trademarks and service marks are owned by Tellabs Operations, Inc., or its affiliates in the United States and/or other countries: TELLABS®, TELLABS and T symbol®, and T symbol®. Any other company or product names may be trademarks of their respective companies.

Copyright © 2007 Tellabs. All rights reserved.

74.1772 Rev.A 01/07 Datasheet

Tellabs® 8000 Network Manager Resilience Service